

grazia&co melbourne
1 / 10-14 advantage road
highett, vic, 3190
phone 03 9555 5760

grazia&co sydney
12b, 32 ralph street
alexandria, nsw, 2015
phone 02 8914 0350

ivy coffee table



australian made coffee table designed by clare cousins from Clare Cousins Architects. three cylindrical metal post legs in specified powder coat finish with glass, stone or solid timber top.

grazia&co[®]

stone



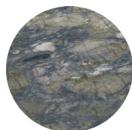
honed
carrara



polished
black marquina



honed viola
limited stock



honed
sea green



unfilled
travertine
limited stock



manhattan
grey
limited stock

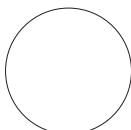
glass



bronze tint



grey tint



clear

solid timber



oak



walnut



oak
black stain



oak
dusk stain

powder coat



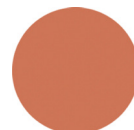
apo grey



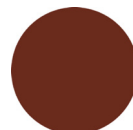
transformer
grey



texture
black



clay



mpavilion
red

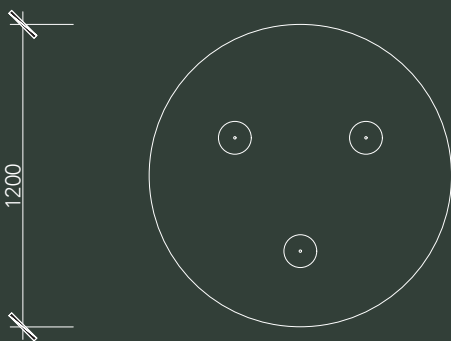
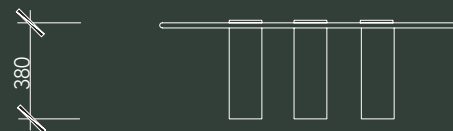
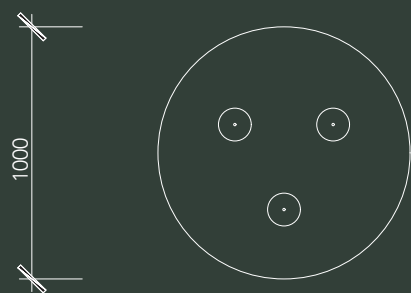
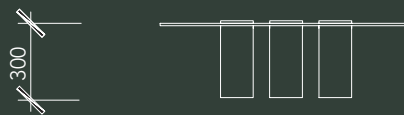
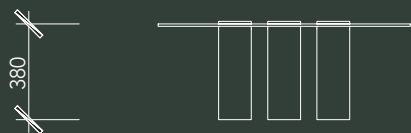


dark
bronze

grazia&co[®]

technical specifications

ivy coffee table



product specifications

designer

clare cousins of
clare cousins architects
in collaboration with
grazia&co

year designed

2014

warranty

- i. warranty period of 2 years for the structural integrity of the furniture under 'normal use'
- ii. natural materials like solid and veneer timbers can vary in colour, natural figuration and texture. these are not considered faults
- iii. movement, joint separation, bowing as a result of fluctuations in temperature and any damage caused by direct sunlight are not warranted
- iv. day to day use and wear and tear that can cause scratches, expansion, colour changes, chips, burns, splits are not warranted
- v. painted and stained timber can chip. this is not warranted and considered as wear and tear through use of the item
- vi. natural stone, reconstituted stone materials and glass are all materials sourced by external and independent suppliers that have unique and specific warranty details that can be obtained as required on request
- vii. chipping and scratches on powder coated metal due to wear and tear are not warranted
- viii. metal pieces that are not specific to outdoor use that are exposed to the elements are not warranted
- ix. raw metals oxidise and tarnish over time and are not considered faults of manufacturing
- x. broken, missing or ceased attachments like levelling feet, rubber stoppers and felt pads are not warranted

all terms outlined in this document are applicable exclusively to projects and orders that are based in australia.

for warranty claims outside australia, please note that a 12 month warranty period will apply, all claims are to be taken up with the international selling agent.

to view the full warranty please refer to the link below
<https://graziaandco.com.au/grazia-terms-and-conditions/>

craftmanship: manufactured in australia
materials: metal/stone/solid timber/10mm
toughened glass
lead time: if not in stock, 10-12 weeks
suitability: indoor use



australian
made

2

2 year
warranty

grazia&co[®]

finishes & product care

powder coated

items wash as required with warm soapy water using a soft clean cloth. for marine or commercial environments, we recommend regular cleaning. do not pressure wash or steam items that are powder coated. if powder coating chips due to a knock and / or rough treatment this is not covered by warranty. touch up paint can be purchased on request (depending on availability). scratches and chips should be repaired as soon as they appear

glass, perspex, resin and ceramic

these hard flat surface materials should be cleaned and or dusted with a soft cloth. for more stubborn marks, use a non-abrasive mild soap and damp cloth. never use wool metallic scourers as these will scratch the surface. chipping and scratching are considered wear and tear of the product are not warranted

marble, granite and tile

surfaces grazia & co use various marbles, granites, bluestone and tiles. these stones are a natural product so the colour and veins can vary. these hard surfaces can be cleaned with warm soapy water. leaving food residue or liquid on the stone for an extended period can penetrate the stone and cause permanent staining. staining and chipping of the stone is not covered under the warranty and is considered general wear and tear



no direct
sunlight

grazia&co[®]