

grazia&co melbourne
1 / 10-14 advantage road
highett, vic, 3190
phone +61 3 9555 5760

grazia&co sydney
12b, 32 ralph street
alexandria, nsw, 2015
phone +61 2 8914 0350

pillar high table



the pillar high/bar table is an australian made pedestal table with a pill shaped table top and matching pill shaped disc base with single or double column and a powder coated finish. various top finishes, sizes and shapes made to order. metal shelf and coat hook additions available.

sizes and shapes are customisable.

grazia&co[®]

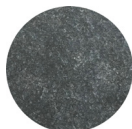
stone



honed carrara
(indoor use only)



honed manhattan grey
(indoor use only)
limited stock



flamed zimbabwe

compact laminate



black



white

timber - indoor use only



black



dusk



natural oak



frost

laminate top with exposed ply edge - *indoor use only*



black



white

powder coat



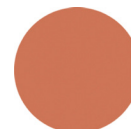
texture charcoal



texture suede



apo grey



clay



texture black



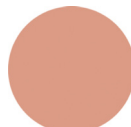
shoji white



mpavilion red



stone



coral



mangrove



transformer
grey



earth



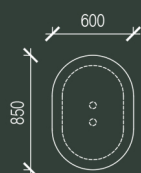
dark bronze

custom

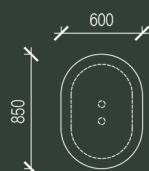
*custom upholstery
and powder coat
as specified*



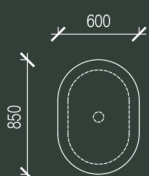
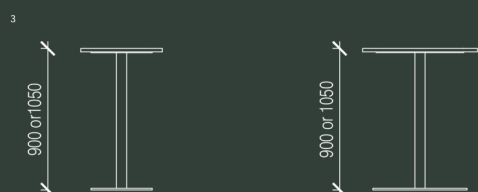
technical specifications



double pillar high table with metal shelf and hooks



double pillar high table



single pillar high table

year released
2017

warranty

pillar indoor

- i. warranty period of 3 years for the structural integrity of the furniture under 'normal use'
- ii. chipping and scratches on powder coated metal due to wear and tear are not warranted
- iii. metal pieces that are not specific to outdoor use that are exposed to the elements are not warranted
- iv. raw metals oxidise and tarnish over time and are not considered faults of manufacturing
- v. all materials sourced by external and independent suppliers that have unique and specific warranty details that can be obtained as required on request.
- vi. broken, missing or ceased attachments like levelling feet, rubber stoppers and felt pads are not warranted.
- ii. natural materials like solid and veneer timbers can vary in colour, natural figuration and texture. these are not considered faults.
- iii. movement, joint separation, bowing as a result of fluctuations in temperature and any damage caused by direct sunlight are not warranted.
- iv. day to day use and wear and tear that can cause scratches, expansion, colour changes, chips, burns, splits are not warranted.
- v. painted and stained timber can chip. this is not warranted and considered as wear and tear through use of the item.

all terms outlined in this document are applicable exclusively to projects and orders that are based in australia.

for warranty claims outside australia, please note that a 12 month warranty period will apply, all claims are to be taken up with the international selling agent

to view the full warranty please refer to the link below
<https://graziaandco.com.au/grazia-terms-and-conditions/>

craftmanship:

manufactured in australia

materials:

aluminium column/s and base with nominated top

lead time:

8-10 weeks. lead times may vary during peak periods

suitability:

indoor & outdoor



australian
made

3

3 year
warranty



finishes & product care

marble and granite

grazia & co use various marbles, granites, bluestone and tiles. these stones are a natural product so the colour and veins can vary. these hard surfaces can be cleaned with warm soapy water. leaving food residue or liquid on the stone for an extended period can penetrate the stone and cause permanent staining. staining and chipping of the stone is not covered under the warranty and is considered general wear and tear.

solid timber and veneer

grazia&co timber furniture is finished with a clear satin lacquer inclusive of an ultraviolet light protector. this may reduce the harsh effects of direct sunlight although cannot eliminate fading and discolouration completely. therefore, we do not recommend furniture be left in direct sunlight for long periods of time. avoid placing hot crockery on furniture surfaces which in turn may burn, discolour or lift binding agents. coasters, clothes and mats can be placed between the surface and the hot object. do not position furniture over or next to heating or electrical appliances. please ensure furniture is not exposed to excessive quantities of liquids or moisture which may absorb into the timber. this may result in movements of the timber, change in form, cracking or mould. if your furniture is being used as a writing surface, grazia&co recommends blotters or pads to prevent ball point pens leaving imprints in the timber top. objects resting against or on top of furniture should have some form of padding between the timber and the object. avoid bare metal or sharp pointed edges. a small amount of natural movement of the timber is expected as it adapts to the conditions of your home, due to variations in humidity and temperature.

compact laminate

compact laminate is scratch resistant but not scratch proof. compact laminate products are easy to clean, solvent resistant and water resistant. dust with a soft cloth. clean stubborn marks with warm water and household detergent or window cleaner is also a good option. never use wool metallic scourers as these will scratch the compact laminate surface.

powder coated items care

wash as required with warm soapy water using a soft clean cloth. for marine or commercial environments, we recommend regular cleaning. do not pressure wash or steam items that are powder coated. if powder coating chips due to a knock and / or rough treatment this is not covered by warranty. touch up paint can be purchased on request (depending on availability). scratches and chips should be repaired as soon as they appear.

please visit [grazia&co website](#) for further details.

grazia&co[®]