

grazia&co melbourne
1 / 10-14 advantage road
highett, vic, 3190
phone 03 9555 5760

grazia&co sydney
12b, 32 ralph street
alexandria, nsw, 2015
phone 02 8914 0350

stamp side table



designed and manufactured in australia the stamp side table is a compact powder coated aluminium semicircular base with a fine finished brass or stainless steel rod detail. inset natural stone, timber or leather top options available.

grazia&co®

stone - subject to availability



sicily



camio



arena



aurora



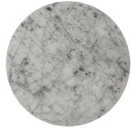
manhattan
grey*



honed
viola*



black
marquina*



honed
carrara*

**limited stock*

connector rail

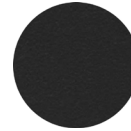


brass



stainless steel

house powder coat



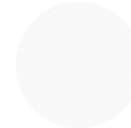
texture black



texture suede



apo grey

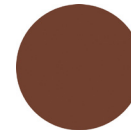


texture white

premium powder coat



stone



earth



dark bronze



transformer
grey

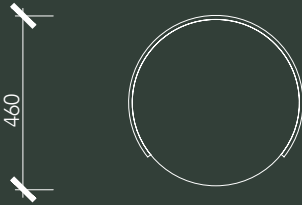
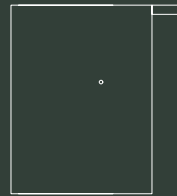
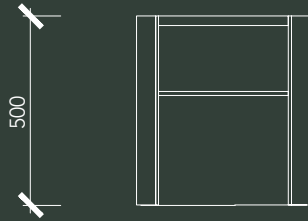


mangrove



grazia&co[®]

technical specifications



product specifications

designer

miriam fanning of
mim design
in collaboration with
grazia&co

year designed

2016

warranty

- i. warranty period of 3 years for the structural integrity of the furniture under 'normal use'
- ii. chipping and scratches on powder coated metal due to wear and tear are not warranted
- iii. metal pieces that are not specific to outdoor use that are exposed to the elements are not warranted
- iv. raw metals oxidise and tarnish over time and are not considered faults of manufacturing
- v. natural stone and reconstituted stone materials are all materials sourced by external and independent suppliers that have unique and specific warranty details that can be obtained as required on request
- vi. broken, missing or ceased attachments like levelling feet, rubber stoppers and felt pads are not warranted.

all terms outlined in this document are applicable exclusively to projects and orders that are based in australia.

for warranty claims outside australia, please note that a 12 month warranty period will apply, all claims are to be taken up with the international selling agent.

to view the full warranty please refer to the link below

<https://graziaandco.com.au/grazia-terms-and-conditions/>

craftmanship:	designed and manufactured in australia
materials:	powdercoated aluminium, brass or stainless steel rail, specified stone
lead time:	10-12 weeks if not in stock. lead times may vary during peak periods
suitability:	indoor use



finishes & product care

marble, granite and tile

surfaces grazia & co use various marbles, granites, bluestone and tiles. these stones are a natural product so the colour and veins can vary. these hard surfaces can be cleaned with warm soapy water. leaving food residue or liquid on the stone for an extended period can penetrate the stone and cause permanent staining. staining and chipping of the stone is not covered

powder coated

items wash as required with warm soapy water using a soft clean cloth. for marine or commercial environments, we recommend regular cleaning. do not pressure wash or steam items that are powder coated. if powder coating chips due to a knock and / or rough treatment this is not covered by warranty. touch up paint can be purchased on request (depending on availability). scratches and chips should be repaired as soon as they appear. under the warranty and is considered general wear and tear.



no direct
sunlight

grazia&co[®]