

grazia&co melbourne  
1 / 10-14 advantage road  
highett, vic, 3190  
phone +61 3 9555 5760

grazia&co sydney  
12b, 32 ralph street  
alexandria, nsw, 2015  
phone +61 2 8914 0350

# iva stool solid timber seat



earth



american  
walnut



american  
oak



brass

made in australia, the iva stool features a solid metal rod frame with a brass or stainless steel footrail and solid timber american oak or walnut seat. available in range of powder coat colours.

grazia&co®

### solid timber seat



american oak



american walnut

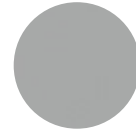
### house powder coat



texture white



texture black

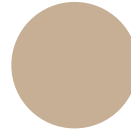


apo grey

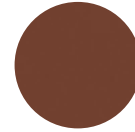


texture suede

### premium powder coat



stone



earth



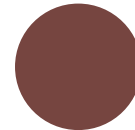
dark bronze



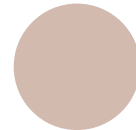
monument



deep ocean



manor red



pink sand



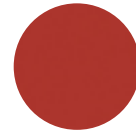
mangrove



deep brunswick green



transformer grey gloss

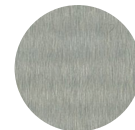


signal red gloss

### footrail

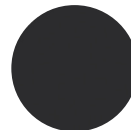


natural brass

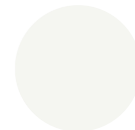


stainless steel

### caps to feet



black



white

### custom

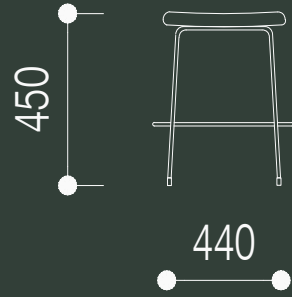
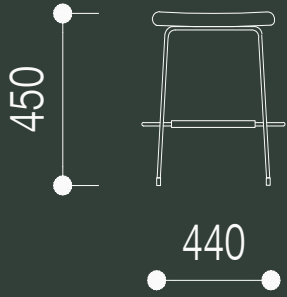
custom finishes as specified



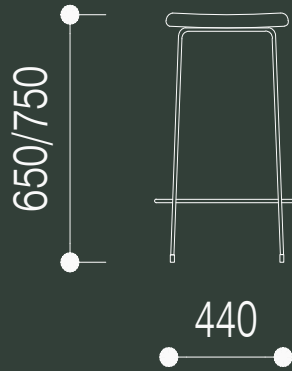
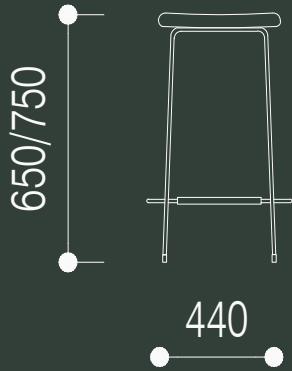
# technical specifications

---

1 - junior stool



2 - no back stool



**design registration no**  
201714063

**year released**  
2017

## warranty

- i. warranty period of 3 years for the structural integrity of the stool under 'normal use'
- ii. chipping and scratches on powder coated metal due to wear and tear are not warranted
- iii. metal pieces that are not specific to outdoor use that are exposed to the elements are not warranted
- iv. raw metals oxidise and tarnish over time and not considered faults of manufacture.
- v. the warranty covers the timber and metal frames.
- vi. natural materials like solid and veneer timbers can vary in colour, natural figuration and texture. these are not considered faults.
- vii. timber movement, joint separation, bowing as a result of fluctuations in temperature and any damage caused by direct sunlight are not warranted.
- viii. day to day use and wear and tear that can cause scratches, expansion, colour changes, chips, burns, splits are not warranted.
- ix. painted and stained timber can chip. this is not warranted and considered as wear and tear through use of the item.

*all terms outlined in this document are applicable exclusively to projects and orders that are based in australia. for warranty claims outside australia, please note that a 12 month warranty period will apply, all claims are to be taken up with the international selling agent. to view the full warranty please refer to the [grazia&co website](#).*

**craftmanship:**

designed and manufactured in australia

**materials:**

seat: olid oak or walnut with oiled or polyurethane finish

frame: powder coated metal with brass or stainless steel footrail

**lead time:**

8-10 weeks. lead times may vary during peak periods

**suitability:**

indoor use



australian  
made



3 year  
warranty

**grazia&co**<sup>®</sup>

### **solid timber**

grazia&co timber furniture is finished with a clear satin lacquer inclusive of an ultraviolet light protector. this may reduce the harsh effects of direct sunlight although cannot eliminate fading and discolouration completely. therefore, we do not recommend furniture be left in direct sunlight for long periods of time. avoid placing hot crockery on furniture surfaces which in turn may burn, discolour or lift binding agents. coasters, clothes and mats can be placed between the surface and the hot object. do not position furniture over or next to heating or electrical appliances. please ensure furniture is not exposed to excessive quantities of liquids or moisture which may absorb into the timber. this may result in movements of the timber, change in form, cracking or mould. if your furniture is being used as a writing surface, grazia&co recommends blotters or pads to prevent ball point pens leaving imprints in the timber top. objects resting against or on top of furniture should have some form of padding between the timber and the object. avoid bare metal or sharp pointed edges. a small amount of natural movement of the timber is expected as it adapts to the conditions of your home, due to variations in humidity and temperature.

### **powder coat**

wash as required with warm soapy water using a soft clean cloth. for marine or commercial environments, we recommend regular cleaning. do not pressure wash or steam items that are powder coated. if powder coating chips due to a knock and / or rough treatment this is not covered by warranty. touch up paint can be purchased on request (depending on availability). scratches and chips should be repaired as soon as they appear.

for further details please visit the [grazia&co website](#).

